

# Easy Pump with Wayne Ovation 1



## Installation Manual

Upgrading the Wayne Ovation 1 to EMV  
using Freedom Electronics Easy Pump

Rev 1.4 • 3/2021

Kit #	SW00000 Kit
Description	Easy Pump Install
Pump Model	Wayne Ovation 1

Freedom Electronics  
Technical Support 800-761-9369 Option 2

# Easy Pump with Wayne Ovation 1



## Parts list

Manufacturer Part #	Description	Quantity
SW00001	Ovation FIM-20 Insert	2
SW00002	Ovation Insert Bracket	2
SW00003	Ovation Insert Gasket	2
SW00004	Ovation soft keys Overlay	4
SW00005	Ovation Blanking Panel Gasket	2
SW00006	Ovation Blanking Panel	2
SW00007	Ovation Blanking Panel Overlay	2
SC00004	24V/5V Dual Power Supply	1
SC00005	Power Supply Bracket	1
SC00007	FIM-20 Power Cable	2
SC00002	FIM-20/Printer Data Cable	2
SC00021	Power Supply AC Input Cable	1
M3x0.5mmx12mm	M3 Phillips No. 1 with 0.5mm Pitch and 12mm Length (McMaster P/N: 92000A122) "PAX Screw"	8
6-20x3/8 Hex	3/8" Hex Head #6-20 Thread (McMaster P/N: 93880A146)	8
6-32x3/8	3/8" Phillips No. 2 #6-32 Thread (McMaster P/N: 90272A146)	16
SC00025	Bag of zip ties (25 pack)	1
EP MET cert	MET Labs Decal	2
FIM-20	Sound Payments IM-20 (sold separately)	

## Tools Required

- Flat Head screwdriver
- Phillips® Screwdriver
- 5/32" Nut Driver
- 5/16" Nut Driver
- 1/4" Nut Driver
- Cutters/dykes
- Pliers
- Putty knife
- Isopropyl Alcohol

# Easy Pump with Wayne Ovation 1



- We recommend completing the Forecourt install first. Then install a kit into the first dispenser and verify operations before moving onto any others.
- The site will be able to run on dual systems, the new Easy Pump and the existing DCR's. This allows one dispenser at a time to be upgraded without affecting the customers other dispensers.
- Dispensers with DW-12, DW-10, and Clamshell printers can be upgraded.
- Dispensers with Tearbar printers will require the purchase of the Printer Translator Kit for proper printer operation.
- DCPT printers are NOT compatible with Easy Pump.
- eReceipts are available in place of a printer, or in combination with a printer.
- Dispensers with 10.4" displays will require a 5.7" panels to upgrade. Part# 887818-001-XXX – colors vary.
- Vista Dispensers with SPM Keypads CANNOT be upgraded at this time.

# Easy Pump with Wayne Ovation 1



## Important Safety Information

### Know Your Environment

Working at a fueling station can present many dangers. It is a potentially dangerous environment of electricity, flammable fuels, vapors, and interaction with the general public. Only trained and knowledgeable individuals should perform service on the equipment. It is important to your safety and the safety of others to follow proper procedures.

### Emergency Shut Off (ESO)

Know how to turn OFF power to all the fueling equipment by locating the ESO switch and circuit breakers. You must know how to shut off all fuel flow and electricity in an emergency.

### Follow the Regulations

Information is available at Occupational Safety and Hazard Association (OSHA), National Fire Protection Association (NFPA) 30A; Code for Motor Fuel Dispensing Facilities and Repair Garages, NFPA 70; National Electrical Code (NEC), as well as other national, state and local entities. All applicable codes must be followed to maintain safe installation, service, use and operation of the equipment.

### LOTO (Lockout/Tagout)

Always make sure ALL power to the dispenser is turned OFF before servicing the dispenser. Follow OSHA Standard 29 CFR 1910.147 The Control of Hazardous Energy (Lockout/Tagout).

### No Sparks - No Smoking

Sparks from power tools, burning cigarettes, static electricity, vehicles and other sources can ignite fuels and their vapors. Ensure that you use safe and established practices while working with electrical devices and equipment. **WARNING – EXPLOSION HAZARD. DO NOT DISCONNECT WHILE THE CIRCUIT IS LIVE OR UNLESS THE AREA IS FREE OF IGNITIBLE CONCENTRATIONS.**

### Wear Proper PPE

Check with your company, customers and the job/site specifics to determine what types of personal protective equipment are appropriate. Always wear the proper PPE to prevent injuries and save lives.

### Barricade Your Work Area

One of the dangers of working at an active retail fueling station is the potential impact of customers and the general public. It is important to properly establish your work area by barricading, to reduce the potential of vehicles or customers from entering the work area. The use of barricades is both for the protection of workers and protection of the general public/customers.

### Read the Manual(s)

Knowledge of all related manufacturer procedures, manuals and documents is important. Follow the Recommended Practices of The American Petroleum Institute (API). Understand the specific procedures before starting work. If you do not understand a procedure, call Freedom Electronics at 770-792-8888.

### Notify Site

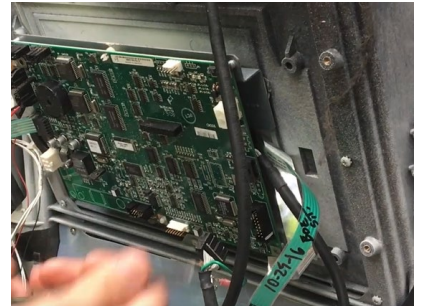
On arrival identify yourself to the site manager and inform them of the work you will be performing.

# Easy Pump with Wayne Ovation 1

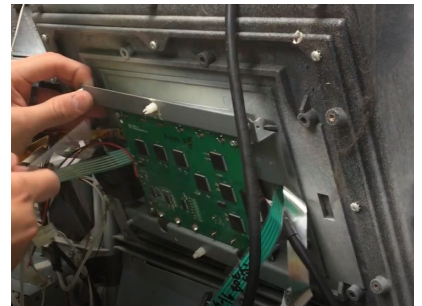
1. Before you begin work, read and understand the Important Safety Information.

2. Remove power from the Ovation dispenser.

3. Disconnect all cables from the CAT/iX board and remove board.

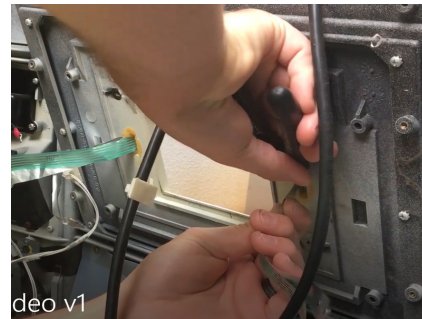


4. Remove the QVGA bracket, display, and lens. Save the screws for step 14.

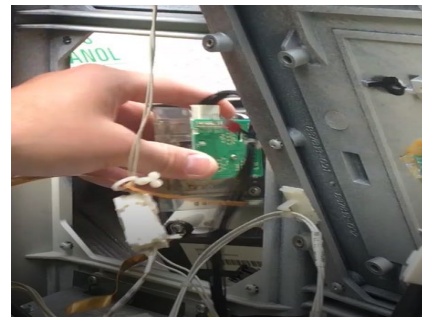


5. Clip off the softkey cables.

6. Remove the Keypad/Card Reader panel (4 screws) and associated cables.



7. Clean off old gasket using a putty knife and alcohol.



# Easy Pump with Wayne Ovation 1

8. Install the new gasket (SW00005) on the SPM/Card Reader opening.
  
  
  
  
  
  
  
  
  
  
9. Install the Blanking Panel Overlay (SW00007) onto the Blanking Panel (SW00006).
  
  
  
  
  
  
  
  
  
  
10. Install the Blanking Panel into the SPM/Card Reader opening using (4) screws (6-20x3/8 Hex).

11. Apply (2) overlays (SW00004) to cover both softkeys.



# Easy Pump with Wayne Ovation 1

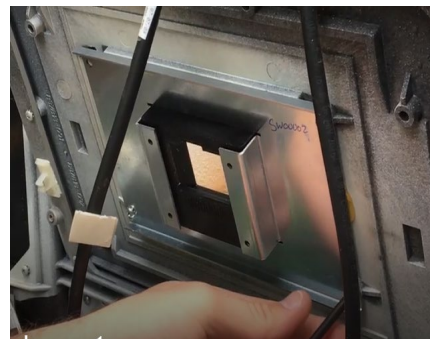
12. Apply the gasket (SW00003) to the FIM-20 Insert (SW00001).



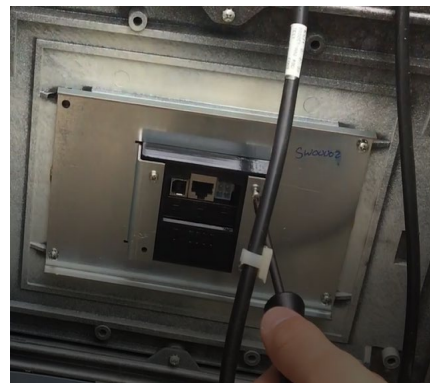
13. Install the FIM-20 Insert (SW00001) into the QVGA display opening.



14. Install the bracket (SW00002) to the backside of the FIM-20 Insert using the (4) 6-32x3/8 screws.



15. Install the FIM-20 unit into the FIM-20 Insert and secure using (4) screws (M3x0.5mmx12mm). Verify the gasket is present on the FIM-20 before installing.



# Easy Pump with Wayne Ovation 1

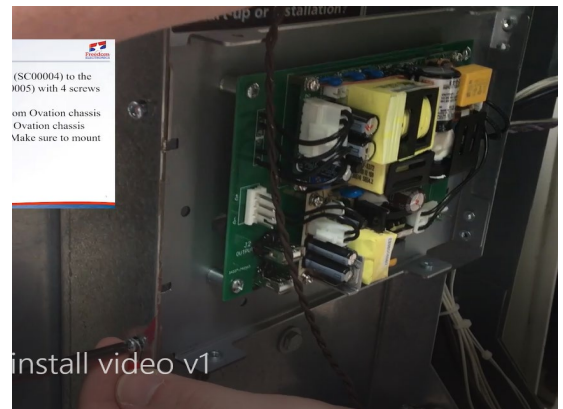
16. Repeat steps 3-15 on other side of dispenser

17. Mount power supply board (SC00004) onto power supply bracket (SC00005) using (4) screws (6-32x3/8).

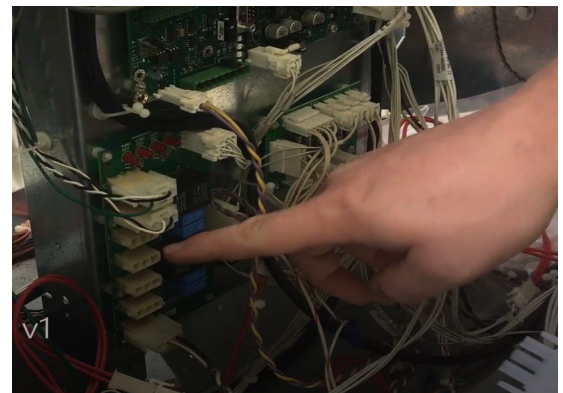


18. Remove grounding wire from side frame.

19. Install power supply assembly to the side frame using (4) screws (6-32x3/8) and reconnect ground wire.



20. Connect the Power Supply Cable (SC00021) to J1 of the Power Supply Board and to an open position (J3-J10) on the Ovation iGEM Relay Board.

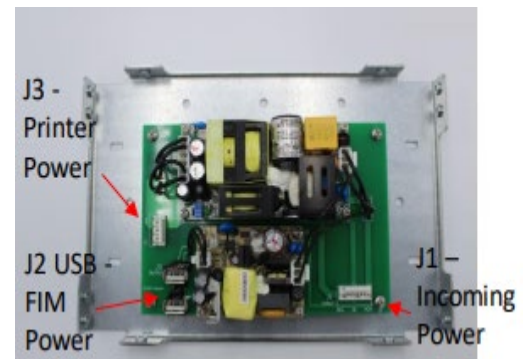




# Easy Pump with Wayne Ovation 1

21. Connect the Printer Data Cable (SC00002) to the FIM-20 and to the printer data connector of the DW-12 or Clamshell printer. Remove old printer data cable. *Repeat on other side of dispenser.*

22. Connect FIM-20 Power Cable (SC00007) to the FIM-20 and to either J2 USB ports of the power supply board. *Repeat on the other side of the dispenser.*



23. Install the MET Cert Decals onto the FIM-20 brackets on both sides of the dispenser.

24. Secure all cables cleanly, to avoid pinching and stretching.

25. Close all dispenser doors securely.

26. Power dispenser back on.